



DEA No. RA0571996
FL License # CMTL-0003
CLIA No. 10D1094068

Certificate of Analysis

Compliance Test

FARMERS' EXTRACTS

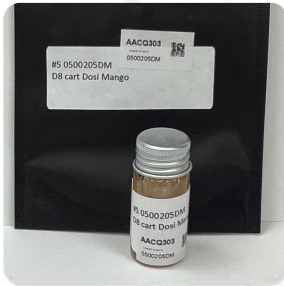
Batch # 0500205DM
Batch Date: 2022-03-25
Extracted From: Hemp Derived

Sampling Method: MSP 7.3.1
Test Reg State: Florida

Order # FAR220325-180001
Order Date: 2022-03-25
Sample # AACQ303

Sampling Date: 2022-03-29
Lab Batch Date: 2022-03-29
Completion Date: 2022-04-04

Initial Gross Weight: 21.804 g



Product Image

Potency Tested	Heavy Metals Passed	2,3-Butanedione Passed	Mycotoxins Passed	Pesticides Passed
Residual Solvents Passed	Listeria Monocytogenes Passed	Pathogenic Passed	Vitamin E Passed	

Delta 8/Delta 10 Potency 12

Tested (LCUV)

Potency Summary

Specimen Weight: 57.330 mg

Analyte	LOD (%)	LOQ (%)	Result (mg/g)	(%)
Delta-8 THC	0.000026	0.001	805.000	80.500
CBD	0.000054	0.001	3.020	0.302
CBC	0.000018	0.001	<LOQ	<LOQ
THCA-A	0.000032	0.001	<LOQ	<LOQ
Delta-9 THC	0.000013	0.001	<LOQ	<LOQ
Delta-10 THC	0.000003	0.001	<LOQ	<LOQ
CBN	0.000014	0.001	<LOQ	<LOQ
CBGA	0.000008	0.001	<LOQ	<LOQ
CBG	0.000248	0.001	<LOQ	<LOQ
CBDV	0.000065	0.001	<LOQ	<LOQ
CBDA	0.000001	0.001	<LOQ	<LOQ
THCV	0.000007	0.001	<LOQ	<LOQ

Total Delta 8 80.500%	-	Total Delta 10 None Detected
Total THC None Detected	-	Total CBD 0.302%
Total CBG None Detected	-	Total CBN None Detected
Other Cannabinoids None Detected	-	Total Cannabinoids 80.802%

Xueli Gao
Ph.D., DABT
Lab Toxicologist

Aixia Sun
D.H.Sc., M.Sc., B.Sc., MT (AAB)
Lab Director/Principal Scientist



Definitions and Abbreviations used in this report: *Total CBD = CBD + (CBD-A * 0.877), *Total CBDV = CBDV + (CBDVA * 0.87), *Total THC = THCA-A * 0.877 + Delta 9 THC, *Total THCV = THCV + (THCVA * 0.87), *CBG Total = (CBGA * 0.877) + CBG, *CBN Total = (CBNA * 0.877) + CBN, *Total CBC = CBC + (CBCA * 0.877), *Total THC-O-Acetate = Delta 8 THC-O-Acetate + Delta 9 THC-O-Acetate, *Other Cannabinoids Total = Total Cannabinoids - All the listed cannabinoids on the summary section, *Total Detected Cannabinoids = Delta8a10a-THC + Delta8-THC + Total CBN + CBT + Delta8-THCV + Total CBG + Total CBD + Total THCV + CBL + Total THC + Total CBC + Total CBDV + Delta10-THC + Total THC-O-Acetate, *Analyte Details above show the Dry Weight Concentrations unless specified as 12% moisture concentration. (mg/ml) = Milligrams per Milliliter, LOQ = Limit of Quantitation, LOD = Limit of Detection, Dilution = Dilution Factor (ppb) = Parts per Billion, (%) = Percent, (cfu/g) = Colony Forming Unit per Gram (cfu/g) = Colony Forming Unit per Gram, LOD = Limit of Detection, (µg/g) = Microgram per Gram (ppm) = Parts per Million, (ppm) = (µg/g), (aw) = aw (area ratio) = Area Ratio, (mg/Kg) = Milligram per Kilogram, *Measurement of Uncertainty = +F 10%

This report shall not be reproduced, without written approval, from ACS Laboratory. The results of this report relate only to the material or product analyzed. Test results are confidential unless explicitly waived otherwise. Accredited by a third-party accrediting body as a competent testing laboratory pursuant to ISO/IEC 17025 of the International Organization for Standardization.



D8 cart Dosi Mango
Sample Matrix:
CBD/HEMP
Derivative Products
(Inhalation - Heated)



DEA No. RA0571996
FL License # CMTL-0003
CLIA No. 10D1094068

Certificate of Analysis

Compliance Test

FARMERS' EXTRACTS

Batch # 0500205DM
Batch Date: 2022-03-25
Extracted From: Hemp Derived

Sampling Method: MSP 7.3.1
Test Reg State: Florida

Order # FAR220325-180001
Order Date: 2022-03-25
Sample # AACQ303

Sampling Date: 2022-03-29
Lab Batch Date: 2022-03-29
Completion Date: 2022-04-04

Initial Gross Weight: 21.804 g

Pesticides FL V4

Specimen Weight: 260.200 mg

Passed
(LCMS/GCMS)

Residual Solvents - FL (CBD)

Specimen Weight: 11.300 mg

Passed
(GCMS)

Dilution Factor: 5.765

Analyte	LOQ (ppb)	Action Level (ppb)	Result (ppb)	Analyte	LOQ (ppb)	Action Level (ppb)	Result (ppb)
Abamectin	28.23	300	<LOQ	Fludioxonil	48	3000	<LOQ
Acephate	30	3000	<LOQ	Hexythiazox	30	2000	<LOQ
Acequinocyl	48	2000	<LOQ	Imazalil	30	100	<LOQ
Acetamiprid	30	3000	<LOQ	Imidacloprid	30	3000	<LOQ
Aldicarb	30	100	<LOQ	Kresoxim Methyl	30	1000	<LOQ
Azoxystrobin	10	3000	<LOQ	Malathion	30	2000	<LOQ
Bifenazate	30	3000	<LOQ	Metaxyl	10	3000	<LOQ
Bifenthrin	30	500	<LOQ	Methiocarb	30	100	<LOQ
Boscalid	10	3000	<LOQ	Methomyl	30	100	<LOQ
Captan	30	3000	<LOQ	methyl-Parathion	10	100	<LOQ
Carbaryl	10	500	<LOQ	Mevinphos	10	100	<LOQ
Carbofuran	10	100	<LOQ	Myclobutanil	30	3000	<LOQ
Chlorantranilprole	10	3000	<LOQ	Naled	30	500	<LOQ
Chloridane	10	100	<LOQ	Oxamyl	30	500	<LOQ
Chlorfenapyr	30	100	<LOQ	Paclbutrazol	30	100	<LOQ
Chlormequat Chloride	10	3000	<LOQ	Pentachloronitrobenzene	10	200	<LOQ
Chlorpyrifos	30	100	<LOQ	Permethrin	30	1000	<LOQ
Clofentazine	30	500	<LOQ	Phosmet	30	200	<LOQ
Coumaphos	48	100	<LOQ	Piperonylbutoxide	30	3000	<LOQ
Cyfluthrin	30	1000	<LOQ	Prallethrin	30	400	<LOQ
Cypermethrin	30	1000	<LOQ	Propiconazole	30	1000	<LOQ
Daminozide	30	100	<LOQ	Propoxur	30	100	<LOQ
Diazinon	30	200	<LOQ	Pyrethrins	30	1000	<LOQ
Dichlorvos	30	100	<LOQ	Pyridaben	30	3000	<LOQ
Dimethoate	30	100	<LOQ	Spinetoram	10	3000	<LOQ
Dimethomorph	48	3000	<LOQ	Spinosad	30	3000	<LOQ
Ethoprophos	30	100	<LOQ	Spiromesifen	30	3000	<LOQ
Etofenprox	30	100	<LOQ	Spirotetramat	30	3000	<LOQ
Etoxazole	30	1500	<LOQ	Spiroxamine	30	100	<LOQ
Fenhexamid	10	3000	<LOQ	Tebuconazole	30	1000	<LOQ
Fenoxycarb	30	100	<LOQ	Thiacloprid	30	100	<LOQ
Fenpyroximate	30	2000	<LOQ	Thiamethoxam	30	1000	<LOQ
Fipronil	30	100	<LOQ	Trifloxystrobin	30	3000	<LOQ
Fonicamid	30	2000	<LOQ				

Dilution Factor: 1.000

Analyte	LOQ (ppm)	Action Level (ppm)	Result (ppm)	Analyte	LOQ (ppm)	Action Level (ppm)	Result (ppm)
1,1-Dichloroethene	0.16	8	<LOQ	Heptane	1.39	5000	<LOQ
1,2-Dichloroethane	0.04	5	<LOQ	Hexane	1.17	290	<LOQ
Acetone	2.08	5000	<LOQ	Isopropyl alcohol	1.39	500	<LOQ
Acetonitrile	1.17	410	<LOQ	Methanol	0.69	3000	<LOQ
Benzene	0.02	2	<LOQ	Methylene chloride	2.43	600	<LOQ
Butanes	2.5	2000	<LOQ	Pentane	2.08	5000	<LOQ
Chloroform	0.04	60	<LOQ	Propane	5.83	2100	<LOQ
Ethanol	2.78	5000	<LOQ	Toluene	2.92	890	<LOQ
Ethyl Acetate	1.11	5000	Passed	Total Xylenes	2.92	2170	<LOQ
Ethyl Ether	1.39	5000	<LOQ	Trichloroethylene	0.49	80	<LOQ
Ethylene Oxide	0.1	5	<LOQ				

Mycotoxins

Specimen Weight: 260.200 mg

Passed
(LCMS)

Dilution Factor: 5.765

Analyte	LOQ (ppb)	Action Level (ppb)	Result (ppb)	Analyte	LOQ (ppb)	Action Level (ppb)	Result (ppb)
Aflatoxin B1	6	20	<LOQ	Aflatoxin G2	6	20	<LOQ
Aflatoxin B2	6	20	<LOQ	Ochratoxin A	12	20	<LOQ
Aflatoxin G1	6	20	<LOQ				

Heavy Metals

Specimen Weight: 251.280 mg

Passed
(ICP-MS)

Dilution Factor: 198

Analyte	LOQ (ppb)	Action Level (ppb)	Result (ppb)	Analyte	LOQ (ppb)	Action Level (ppb)	Result (ppb)
Arsenic (As)	100	1500	<LOQ	Lead (Pb)	100	500	<LOQ
Cadmium (Cd)	100	500	<LOQ	Mercury (Hg)	100	3000	<LOQ

Xuelli Gao
Ph.D., DABT
Lab Toxicologist

Aixia Sun
D.H.Sc., M.Sc., B.Sc., MT (AAB)
Lab Director/Principal Scientist

Definitions and Abbreviations used in this report: *Total CBD = CBD + (CBD-A * 0.877), *Total CBDV = CBDV + (CBDVA * 0.87), *Total THC = THCA-A * 0.877 + Delta 9 THC, *Total THCV = THCV + (THCVA * 0.87), *CBG Total = (CBGA * 0.877) + CBG, *CBN Total = (CBNA * 0.877) + CBN, *Total CBC = CBC + (CBCA * 0.877), *Total THC-O-Acetate = Delta 8 THC-O-Acetate + Delta 9 THC-O-Acetate, *Other Cannabinoids Total = Total Cannabinoids - All the listed cannabinoids on the summary section, *Total Detected Cannabinoids = Delta8a10a-THC + Delta8-THC + Total CBN + CBT + Delta8-THCV + Total CBG + Total CBD + Total THCV + CBL + Total THC + Total CBC + Total CBDV + Delta10-THC + Total THC-O-Acetate, *Analyte Details above show the Dry Weight Concentrations unless specified as 12% moisture concentration. (mg/ml) = Milligrams per Milliliter, LOQ = Limit of Quantitation, LOD = Limit of Detection, Dilution = Dilution Factor (ppb) = Parts per Billion, (%) = Percent, (cfu/g) = Colony Forming Unit per Gram (cfu/g) = Colony Forming Unit per Gram, LOD = Limit of Detection, (ug/g) = Microgram per Gram (ppm) = Parts per Million, (ppm) = (ug/g), (aw) = aw (area ratio) = Area Ratio, (mg/Kg) = Milligram per Kilogram, *Measurement of Uncertainty = +/- 10%

This report shall not be reproduced, without written approval, from ACS Laboratory. The results of this report relate only to the material or product analyzed. Test results are confidential unless explicitly waived otherwise. Accredited by a third-party accrediting body as a competent testing laboratory pursuant to ISO/IEC 17025 of the International Organization for Standardization.





DEA No. RA0571996
FL License # CMTL-0003
CLIA No. 10D1094068

Certificate of Analysis

Compliance Test

FARMERS' EXTRACTS

Batch # 0500205DM
Batch Date: 2022-03-25
Extracted From: Hemp Derived

Sampling Method: MSP 7. 3. 1
Test Reg State: Florida

Order # FAR220325-180001
Order Date: 2022-03-25
Sample # AACQ303

Sampling Date: 2022-03-29
Lab Batch Date: 2022-03-29
Completion Date: 2022-04-04

Initial Gross Weight: 21.804 g

Pathogenic SAE (qPCR)		Passed (qPCR)	
Specimen Weight: 241.100 mg			
Dilution Factor: 1.000			
Analyte	Action Level (cfu/g)	Result (cfu/g)	Action Level (cfu/g)
Aspergillus (Flavus, Fumigatus, Niger, Terreus)	1	Absence in 1g	1
E.Coli	1	Absence in 1g	1

2,3-butanedione(Diacetyl)		Passed (GCMS)	
Specimen Weight: 11.300 mg			
Dilution Factor: 1.000			
Analyte	LOQ (ppm)	Result (ppm)	
2,3-Butanedione	0.024	<LOQ	

Listeria Monocytogenes		Passed (qPCR)	
Specimen Weight: 989.500 mg			
Dilution Factor: 1.000			
Analyte	Action Level (cfu/g)	Result	
Listeria Monocytogenes	1	Absence in 1g	

Vitamin E (Tocopheryl Acetate)		Passed (LC-MS)	
Specimen Weight: 260.200 mg			
Dilution Factor: 5.765			
Analyte	Result (ppb)		
Vitamin E Acetate	<LOQ		

Xuelli Gao
Xuelli Gao Lab Toxicologist
Ph.D., DABT

Aixia Sun
Aixia Sun Lab Director/Principal Scientist
D.H.Sc., M.Sc., B.Sc., MT (AAB)



Definitions and Abbreviations used in this report: *Total CBD = CBD + (CBD-A * 0.877), *Total CBDV = CBDV + (CBDVA * 0.87), *Total THC = THCA-A * 0.877 + Delta 9 THC, *Total THCV = THCV + (THCVA * 0.87), *CBG Total = (CBGA * 0.877) + CBG, *CBN Total = (CBNA * 0.877) + CBN, *Total CBC = CBC + (CBCA * 0.877), *Total THC-O-Acetate = Delta 8 THC-O-Acetate + Delta 9 THC-O-Acetate, *Other Cannabinoids Total = Total Cannabinoids - All the listed cannabinoids on the summary section, * Total Detected Cannabinoids = Delta9a10a-THC + Delta8-THC + Total CBN + CBT + Delta8-THCV + Total CBG + Total CBD + Total THCV + CBL + Total THC + Total CBC + Total CBDV + Delta10-THC + Total THC-O-Acetate, *Analyte Details above show the Dry Weight Concentrations unless specified as 12% moisture concentration. (mg/ml) = Milligrams per Milliliter, LOQ = Limit of Quantitation, LOD = Limit of Detection, Dilution = Dilution Factor (ppb) = Parts per Billion, (%) = Percent, (cfu/g) = Colony Forming Unit per Gram (cfu/g) = Colony Forming Unit per Gram, LOD = Limit of Detection, (ug/g) = Microgram per Gram (ppm) = Parts per Million, (ppm) = (ug/g), (aw) = aw (area ratio) = Area Ratio, (mg/Kg) = Milligram per Kilogram, *Measurement of Uncertainty = +/- 10%

This report shall not be reproduced, without written approval, from ACS Laboratory. The results of this report relate only to the material or product analyzed. Test results are confidential unless explicitly waived otherwise. Accredited by a third-party accrediting body as a competent testing laboratory pursuant to ISO/IEC 17025 of the International Organization for Standardization.